

Installation Precautions:

1. Please read through the Instructions before installation.
2. The product should be installed by a professional electrician. Make sure the power supply is cut off before installation and maintenance, to avoid the risk of electric shock
3. Suitable for indoor use (not for wet location).
4. The light can be recessed on the ceiling, where sufficient space must be reserved for installation. Do not cover the light with any thermal insulation or consumable articles to avoid fire hazards.
5. Do not install the light on an unstable or unsolid skylight, to avoid falling off.
6. The light source of this lamp is not replaceable, once it needs to be replaced (such as the end of the life of the light source), the entire lamp should be replaced.
7. Please keep this Instruction properly for future reference.

Light Installation and Wiring:

①

Model	Cut out (mm)
DLN36-LM07*	78*72
DLN36-LM10*	
DLN36-LM13*	
MTN36-207*	150*72
MTN36-210*	
MTN36-213*	

②

Required Ceiling Plenum Height

③ **Front installation**

Trimless frame installation
Ceiling thickness: 5-25mm

④ **Back installation**

Different ceiling thickness
Height adjustable

⑤

Apply plaster or spackle

⑥

Wiring
AC220-240V
50/60Hz

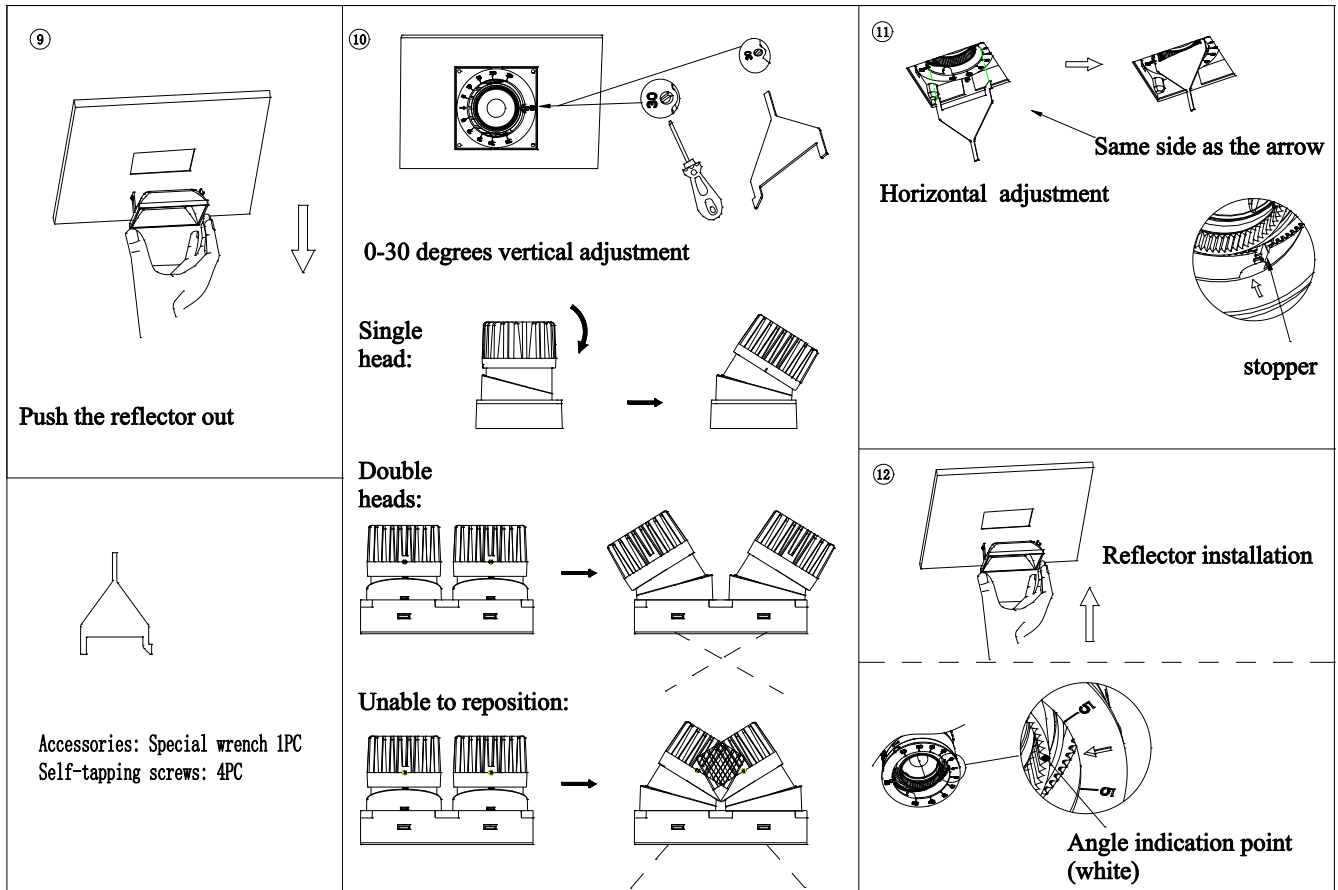
⑦

Install fixture **Install reflector**

In order to prevent the interference of the heat sink during adjustment, the arrow of the double-headed lamp body is relatively loaded according to the figure

- * If the driver of the light comes with lead wires, Connect the input wires according to the wiring diagram on the driver according to the figure 6.
- * Light without driver comes with Red, black, yellow and white 4 lead wires, and it cannot be directly connected to 220V AC. The dimmer (DALI DT8) should be equipped on site. The parameters of the dimmer should meet the constant current 300mA MAX, 36V Typ, and wiring should be done according to the instructions on the label (the red lead wire on the lamp should be W+, black should be W-, yellow should be C+, white should be C-).

Light angle adjustment:



Installation Precautions:

1. Please read through the Instructions before installation.
2. The product should be installed by a professional electrician. Make sure the power supply is cut off before installation and maintenance, to avoid the risk of electric shock
3. Suitable for indoor use (not for wet location).
4. The light can be recessed on the ceiling, where sufficient space must be reserved for installation. Do not cover the light with any thermal insulation or consumable articles to avoid fire hazards.
5. Do not install the light on an unstable or unsolid skylight, to avoid falling off.
6. The light source of this lamp is not replaceable, once it needs to be replaced (such as the end of the life of the light source), the entire lamp should be replaced.
7. Please keep this Instruction properly for future reference.

Light Installation and Wiring:

①

Model	Cut out (mm)
DLN46-LM18*	105*105
DLN46-LM25*	105*105
MTN46-218*	205*100
MTN46-225*	205*100

②

Required Ceiling Plenum Height

③

Front installation

Trimless frame installation
Ceiling thickness: 5-25mm

④

Back installation

Different ceiling thickness
Height adjustable

⑤

Apply plaster or spackle

⑥

Wiring

AC220-240V
50/60Hz

⑦

Install fixture

Install reflector

In order to prevent the interference of the heat sink during adjustment, the arrow of the double-headed lamp body is relatively loaded according to the figure

- * If the driver of the light comes with lead wires, Connect the input wires according to the wiring diagram on the driver according to the figure 6.
- * Light without driver comes with brown and blue lead wires, and it cannot be directly connected to 220V AC. Customer-provided driver shall match the specification of LED source.

Light angle adjustment:

