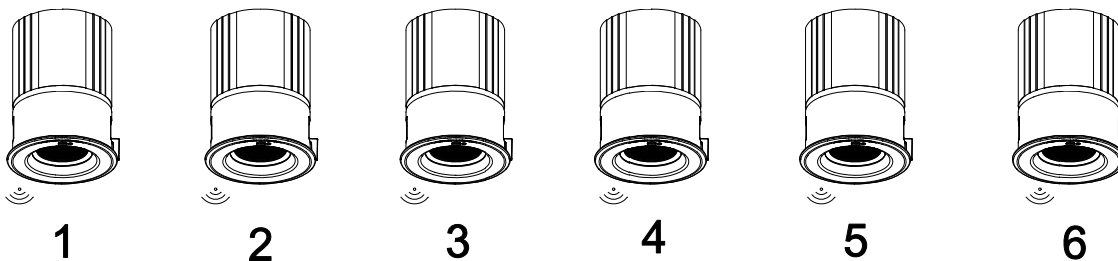


Installation Precaution:

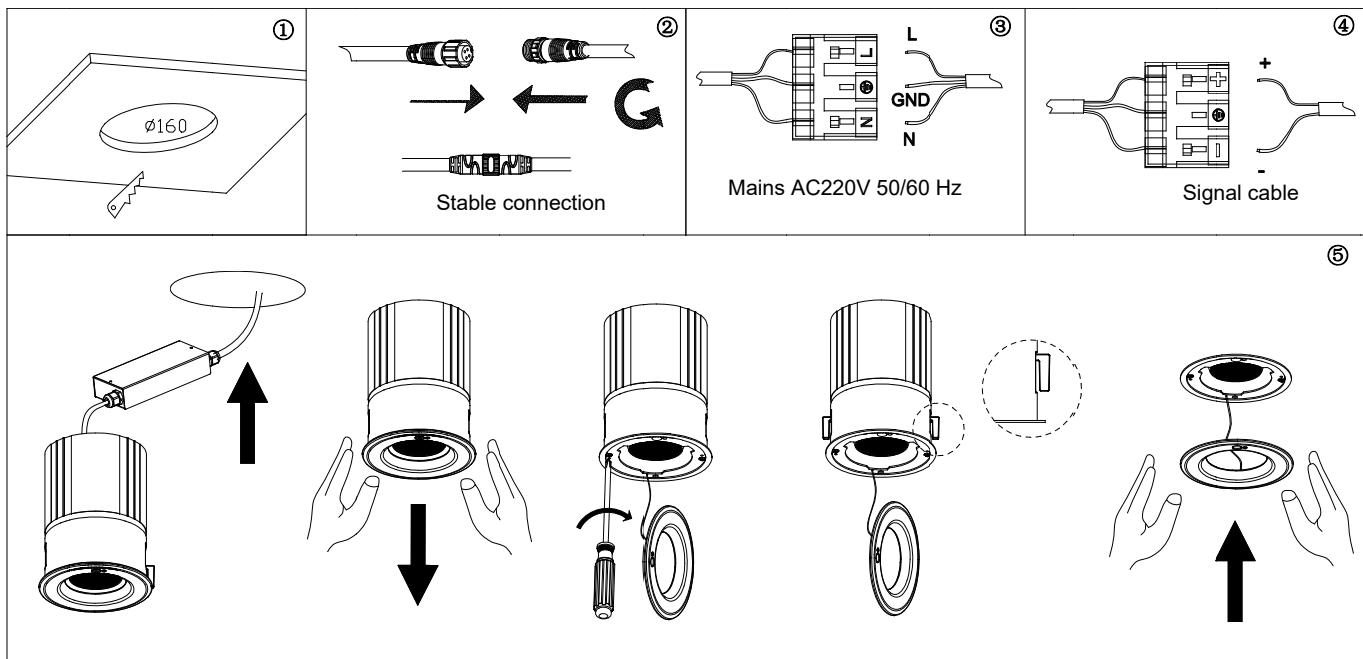
1. Please read the instructions carefully before installation;
2. Please have a professional electrician install it;
3. Please make sure the power is off before installation and maintenance to avoid the risk of electric shock;
4. Please do not cover the heat insulator and combustible materials above the light fixture and bulb after the light fixture is embedded in the surface of the ceiling of the installation to avoid causing fire;
5. Please replace the transparent protective glass immediately if it is cracked;
6. Please do not install the luminaire on unstable and unstable skylight to avoid falling of the luminaire;
7. Please keep the instruction manual for reference.

Installation Preparation:



Please check the fixture number before installing the fixture. Arrange the installation in the order of the fixture number. Use the fixture indicator as a reference to make sure that the fixtures are facing the same direction before installing them.

Fixture Installation:



Authorized by WAC Lighting Corporation, USA, holder of the "WAC" trademark.

China Marketing Headquarters: WAC Lighting Technology (Shanghai) Co.

Address: Room 102, No. 14, Lane 299, Bisheng Road, Pilot Free Trade Zone, Shanghai (201204), P.R.C.

China Factory: Manufactured WAC Lighting(Dongguan)Co,Ltd

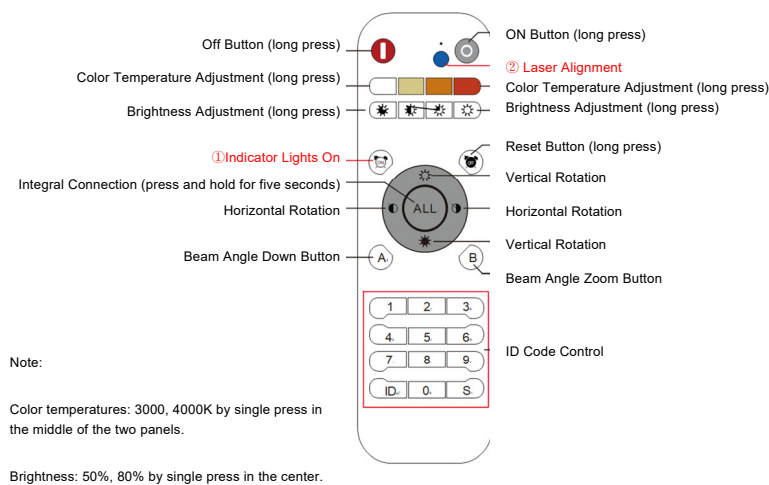
Address: No. 390, Qingfeng Road, Qingxi Town, Dongguan City, Guangdong Province, 523653, P.R. China

1. Cut a hole in the ceiling as shown in Fig. ①, the size of the hole is $\varnothing 160\text{mm}$;
2. Connect the electrical box with the lamp body firmly, refer to Figure ②. And connect the mains and signal master control with the lamp body, refer to Fig. ③④. If there is no signal such as 0-10V or DMX, only connect to the mains.
3. Follow the steps in Fig. ⑤ to send the wired fixture into the ceiling. Remove the bottom cover and twist with a screwdriver for installation. Adjust the L-bracket of the fixture to match the ceiling making the fixture fit tightly to the ceiling to complete the installation.

Remote Control Instructions

1.Product Introduction:

This remote control is used with visible laser pair code connection. Control protocol: RF433 wireless radio frequency. Control distance: ≤ 20 meters without obstacles. Functions: single control, total control, multi-action linkage control, light on, brightness adjustment, color temperature adjustment, beam angle adjustment, one key reset, ID code, ID code connection.



2. Remote control

Single-lamp control, laser-to-light connection

Click the "ON" button to turn on the lamp indicator (the indicator is always on), long press can also turn off the indicator.

Press the "blue key" to shoot the laser. Aim the laser at the receiving port of the lamp until the indicator light starts to flash that it has been successfully docked, at this time, the lamp belongs to the controllable state.

General Control

Press and hold the "ALL" button for 5 seconds to connect all energized remote control lights. The indicator light on the fixture flashes to indicate that it can be controlled. For multi-level control, please move to the closest position to the fixture.

Note: The fixtures will automatically sleep if no operation is performed for 2 minutes. If the light on the fixture goes out, the fixture is dormant and needs to be reconnected as described above.

Single-lamp control, digital coding to connect fixtures

Press and hold the "0" key to activate the numeric buttons. The background light of the remote control numeric keypad lights up, indicating successful activation. When the numeric keypad is active, enter the corresponding fixture number. After confirming the number, press the "ID" button, the lamp indicator will flash to indicate successful connection (if the connection is not successful, please repeat the operation).

Note: When the background light of the remote control is on without any operation, it will turn off automatically after 10 seconds. Press and hold the "0" button to reactivate. Pressing the button will be silent and accompanied by a sound indicates that the button is valid, two consecutive beeps indicate that the button is invalid, please reopen the operation.

Authorized by WAC Lighting Corporation, USA, holder of the "WAC" trademark.

China Marketing Headquarters: WAC Lighting Technology (Shanghai) Co.
Address: Room 102, No. 14, Lane 299, Bisheng Road, Pilot Free Trade Zone, Shanghai (201204), P.R.C.
China Factory: Manufactured WAC Lighting(Dongguan)Co,Ltd
Address: No. 390, Qingfeng Road, Qingxi Town, Dongguan City, Guangdong Province, 523653, P.R. China