

LIGNE PRO - MODEL: LGAR5

Linear Luminaires

WAC

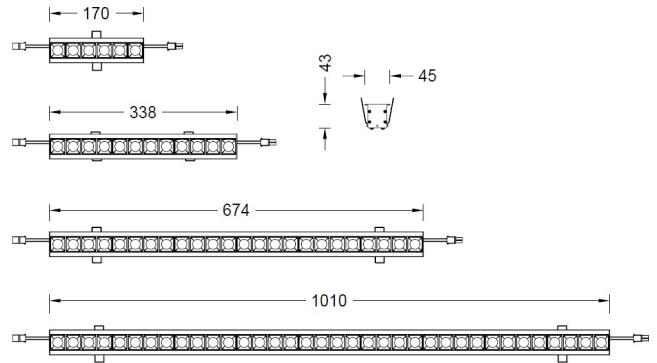
PROJECT:

TYPE:

Product Image



Line Drawing



Product Description

Embedded Graze, using SUBROSA hidden light technology, with multiple light distribution, DC24V input, and can be connected head to tail. Suitable for concealed groove installation linear wall washing applications in hotels and commercial areas

Product Features

- Body Material: Al alloy extruded lamp body
- Optical System: Lens+SUBROSA hidden light system
- Finish: Static electricity powder coating
- Projection direction: /
- Accessories/Brackets: /
- Certification: CQC
- IP Rating: IP20
- Insulation Level: Class III
- Operating Temperature: -20°C~40°C

Product Specifications

- LED Type: SMD
- Opening size: Slot width 37mm
- Ceiling Thickness: 1-25mm
- Shielding Angle: 35°
- Light power: 12W Max
- Source Lm: 1600lm@18W/m;2600lm@30W/m
- LED Lifetime: >50000h-L70 /B10-Ta25°C(LM-80/TM-21)
- CCT/CRI: 2700K, 3000K, 4000K, Ra90
- SDCM: 3 SDCM
- Input: 24V DC
- Dimming: User configured dimming module
- Net Weight: 1.3Kg without packing

Order Model

Model	Sys Power	LED Num	Length	Driver	Reflector	CCT	Beam	Finish
LGAR5 Linear Graze	18 18W/m 30 30W/m	06 6pcs	170mm	N No driver	B Black	27 2700K	E 22°x44°	WT White BK Black
		12 12pcs	338mm			30 3000K	1 16°	
		24 24pcs	674mm			40 4000K	2 22°	
		36 36pcs	1010mm				3 33° 4 44°	

Example: LGAR5-3036N-230BWT

Accessories

/

LIGNE PRO - MODEL: LGAR5

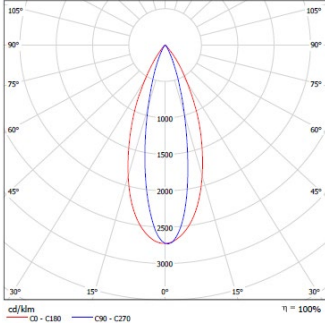
Linear Luminaires

WAC

PROJECT:

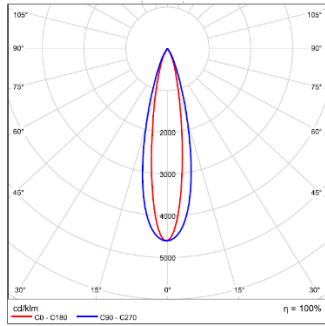
TYPE:

LIGHT DISTRIBUTION@3000K LUMINAIRE DATA



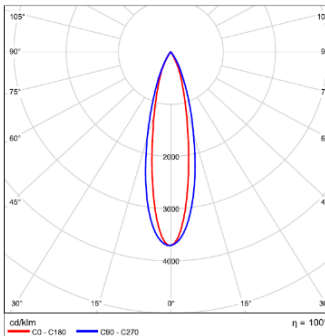
MODEL :	LGAR5-1836N-E30BBK
BEAM ANGLE :	22°X44°
POWER:	18 W/m
LUMENS:	1002 lm
CBCP:	2509 cd
EFFICACY:	56 lm/W

MODEL :	LGAR5-3036N-E30BBK
BEAM ANGLE :	22°X44°
POWER:	30 W/m
LUMENS:	1566 lm
CBCP:	3920 cd
EFFICACY:	52lm/W



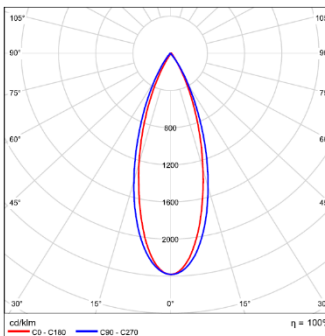
MODEL :	LGAR5-1836N-130BBK
BEAM ANGLE :	16°
POWER:	18 W/m
LUMENS:	1178 lm
CBCP:	5419 cd
EFFICACY:	65 lm/W

MODEL :	LGAR5-3036N-130BBK
BEAM ANGLE :	16°
POWER:	30 W/m
LUMENS:	1840 lm
CBCP:	8467 cd
EFFICACY:	61 lm/W



MODEL :	LGAR5-1836N-230BBK
BEAM ANGLE :	22°
POWER:	18 W/m
LUMENS:	1210 lm
CBCP:	4489 cd
EFFICACY:	67 lm/W

MODEL :	LGAR5-3036N-230BBK
BEAM ANGLE :	22°
POWER:	30 W/m
LUMENS:	1891 lm
CBCP:	7014 cd
EFFICACY:	63 lm/W



MODEL :	LGAR5-1836N-330BBK
BEAM ANGLE :	33°
POWER:	18 W/m
LUMENS:	1213 lm
CBCP:	4489 cd
EFFICACY:	67 lm/W

MODEL :	LGAR5-3036N-330BBK
BEAM ANGLE :	33°
POWER:	30 W/m
LUMENS:	1895 lm
CBCP:	7014 cd
EFFICACY:	63 lm/W

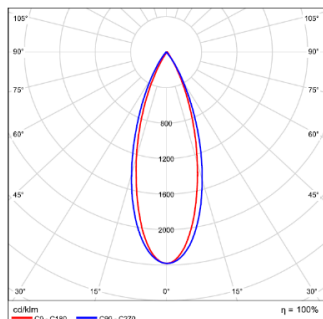
LIGNE PRO - MODEL: LGAR5

Linear Luminaires

WAC

PROJECT:

TYPE:



MODEL :	<u>LGAR5-1836N-430BBK</u>	<u>LGAR5-3036N-430BBK</u>
BEAM ANGLE :	<u>44°</u>	<u>44°</u>
POWER:	<u>18 W/m</u>	<u>30 W/m</u>
LUMENS:	<u>940 lm</u>	<u>1469 lm</u>
CBCP:	<u>1507 cd</u>	<u>2354 cd</u>
EFFICACY:	<u>52 lm/W</u>	<u>49 lm/W</u>