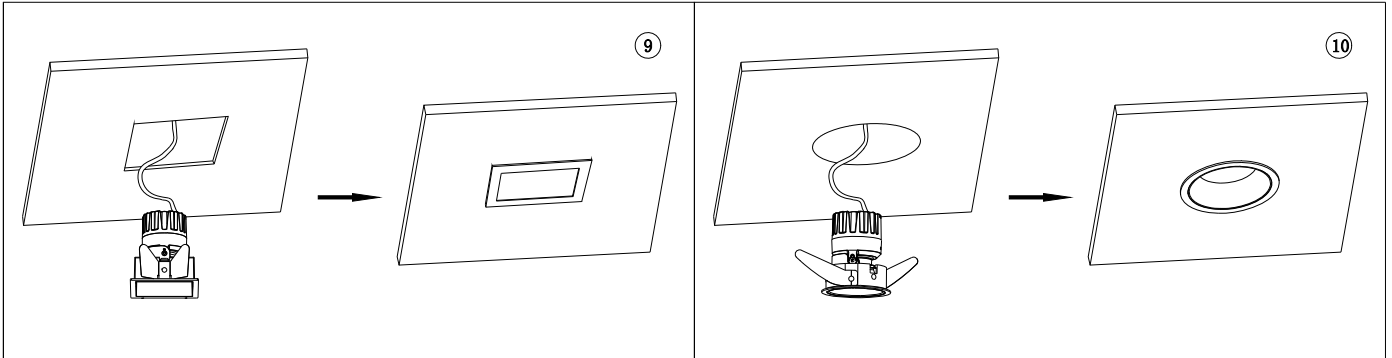
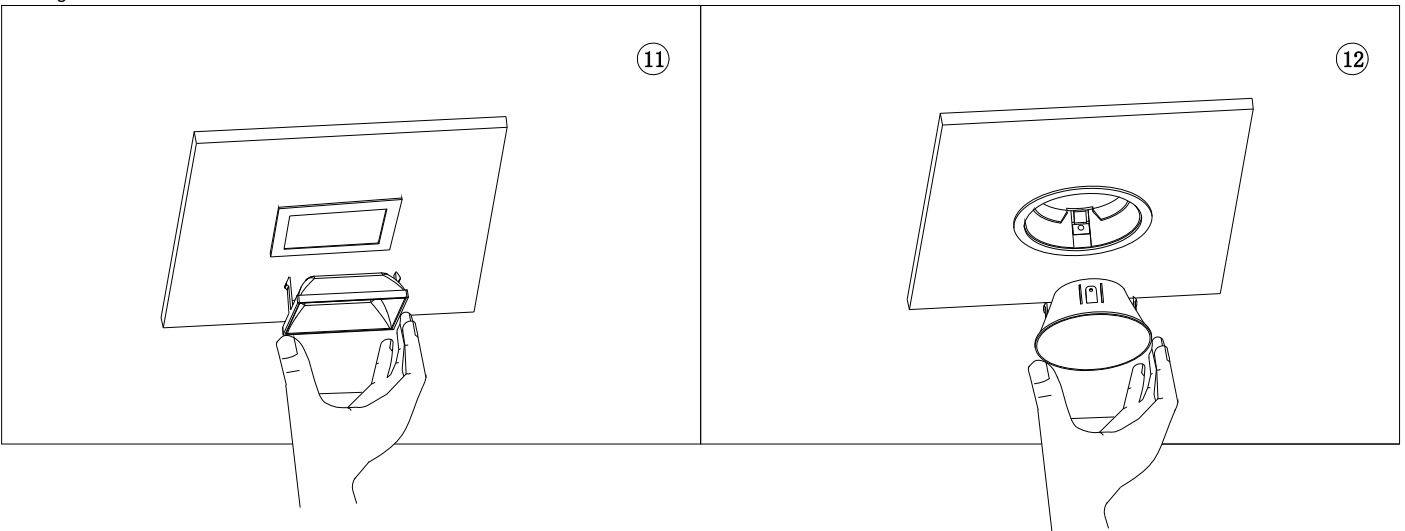


4. Please push the luminaires into the ceiling opening until the panel of the luminaires is leveled with the surface of the ceiling, as shown in Fig. ⑧ ⑨ ⑩.



Reflector Installation and Fixture Adjustment:

1. After aligning the reflector of square luminaire (including square double head) and round luminaire to the snap position, snap the clips of the luminaire tightly, see Fig. 1 & 12.



2. The luminaires can be adjusted horizontally by 360 ° and vertically by 0-21 °. Please adjust the angle before installing the reflector.

- (1). Horizontal angle adjustment is made by rotating the frame located above the light outlet of the luminaires;
- (2). After adjusting the horizontal direction, use the index finger to adjust the angle on the lamp body, which can realize 0-21° angle adjustment;
- (3). After adjusting the angle, click the reflector into place. Please check the direction of the reflector when installing.

Authorized by WAC Lighting Corporation, USA, holder of the "WAC" trademark.

China Marketing Headquarters: WAC Lighting Technology (Shanghai) Co.

Address: Room 102, No. 14, Lane 299, Bisheng Road, Pilot Free Trade Zone, Shanghai (201204), P.R.C.

China Factory: Manufactured WAC Lighting(Dongguan)Co,Ltd

Address: No. 390, Qingfeng Road, Qingxi Town, Dongguan City, Guangdong Province, 523653, P.R. China