

LIGNE PRO - MODEL:OR165WT-11

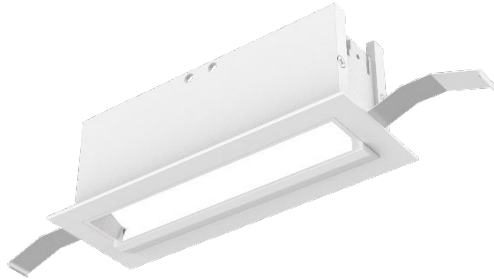
Linear Luminaires

PROJECT:

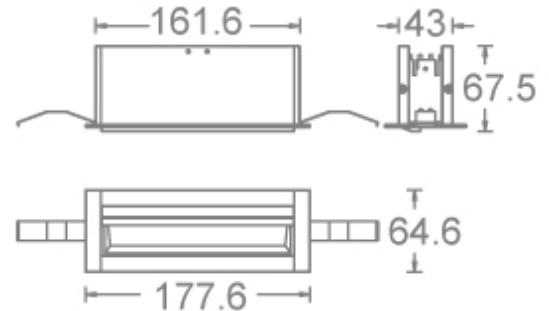
WAC

TYPE:

Product Image



Line Drawing



Product Description

LIGNE PRO recessed linear wall washing luminaire features an aluminum profile body with a sleek and elegant design. It utilizes LED light sources for high luminous efficiency and high color rendering index. The innovative optical system ensures a uniform wall washing effect with no dark areas on the wall or ceiling, while providing excellent anti-glare performance. It is primarily suitable for lighting applications in public spaces, commercial, office, and exhibition areas.

Product Features

- Body Material: Aluminum alloy extruded lamp body
- Optical System: Lenticular
- Surface Finishing: Electrostatic powder coating
- Adjustable Angle: /
- Accessories: /
- Certification: CCC/CE
- IP Rating: IP20
- Insulation Level: Class II
- Operating Temperature: -20°C~40°C

Product Specifications

- Hole Size: 167mm*48mm
- Ceiling Thickness: 5mm~25mm
- Shielding Angle: /
- LED Type: High Power LED
- Source Lm: 2700K 1331lm; 3000K 1375lm; 3500K 1430lm ; 4000K 1485lm
- LED Lifetime: >50000h-L70 /B10-Ta25°C(LM-80/TM-21)
- CCT/CRI: 2700K/3000K/3500K/4000K, Ra90
- SDCM: 3 SDCM
- Input: 220V~240V AC / 50Hz
- Dimming: On-Off /0~10V
- Net Weight: 0.51Kg without packing

Order Model

Model	Comment	Power(W)	Driver	Beam	CCT	Reflector	Finish
OR165 R Recessed mounting 1 Series 65 Width	WT Wallwash Trim	11 11W	E On-Off D 0-10V Dimming	W Wall Wash	27 2700K 30 3000K 35 3500K 40 4000K	B Black W White	WT White BK Black

Example: OR165WT-11E-W40BWT

LIGNE PRO - MODEL:OR165WT-11

Linear Luminaires

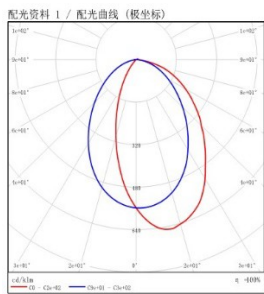
PROJECT:

WAC

TYPE:

Accessories

LIGHT DISTRIBUTION@4000K LUMINAIRE DATA



MODEL: OR165WT-11E-W40BWT

BEAM ANGLE: /

POWER: 11.8W

LUMENS: 669lm

CBCP: /

EFFICACY: 57lm/W

LIGNE PRO - MODEL:OR165WT-22

Linear Luminaires

PROJECT:

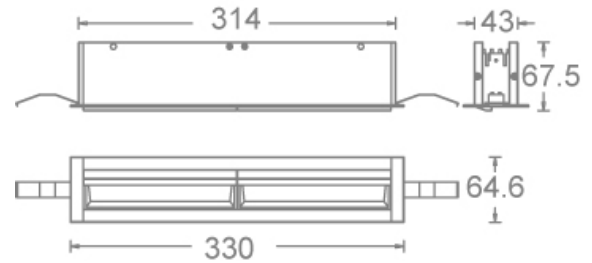
WAC

TYPE:

Product Image



Line Drawing



Product Description

LIGNE PRO recessed linear wall washing luminaire features an aluminum profile body with a sleek and elegant design. It utilizes LED light sources for high luminous efficiency and high color rendering index. The innovative optical system ensures a uniform wall washing effect with no dark areas on the wall or ceiling, while providing excellent anti-glare performance. It is primarily suitable for lighting applications in public spaces, commercial, office, and exhibition areas.

Product Features

- Body Material: Aluminum alloy extruded lamp body
- Optical System: Lenticular
- Surface Finishing: Electrostatic powder coating
- Adjustable Angle: /
- Accessories: /
- Certification: CCC/CE
- IP Rating: IP20
- Insulation Level: Class II
- Operating Temperature: -20°C~40°C

Product Specifications

- Hole Size: 320mm*48mm
- Ceiling Thickness: 5mm~25mm
- Shielding Angle: /
- LED Type: High Power LED
- Source Lm: 2700K 2662lm; 3000K 2750lm; 3500K 2860lm ; 4000K 2970lm
- LED Lifetime: >50000h-L70 /B10-Ta25°C(LM-80/TM-21)
- CCT/CRI: 2700K/3000K/3500K/4000K, Ra90
- SDCM: 3 SDCM
- Input: 220V~240V AC / 50Hz
- Dimming: On-Off /0~10V
- Net Weight: 0.92Kg without packing

Order Model

Model	Comment	Power(W)	Driver	Beam	CCT	Reflector	Finish
OR165							
R Recessed			E On-Off		27 2700K	B Black	
mounting	WT Wallwash Trim	22 22W	D 0-10V Dimming	W Wall Wash	30 3000K	W White	WT White
1 Series					35 3500K		BK Black
65 Width					40 4000K		

Example: OR165WT-22E-W40BWT

LIGNE PRO - MODEL:OR165WT-22

Linear Luminaires

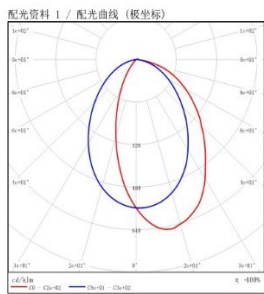
PROJECT:

WAC

TYPE:

Accessories

LIGHT DISTRIBUTION@4000K LUMINAIRE DATA



MODEL: OR165WT-22E-W40BWT

BEAM ANGLE: /

POWER: 23.8W

LUMENS: 1467lm

CBCP: /

EFFICACY: 62lm/W

LIGNE PRO - MODEL:OR165WT-32

Linear Luminaires

PROJECT:

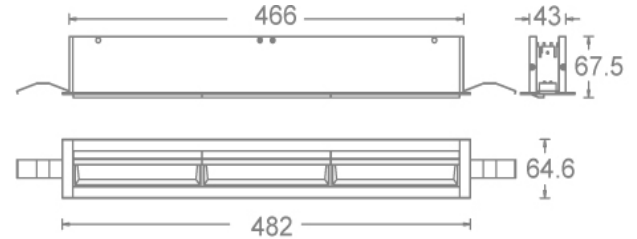
WAC

TYPE:

Product Image



Line Drawing



Product Description

LIGNE PRO recessed linear wall washing luminaire features an aluminum profile body with a sleek and elegant design. It utilizes LED light sources for high luminous efficiency and high color rendering index. The innovative optical system ensures a uniform wall washing effect with no dark areas on the wall or ceiling, while providing excellent anti-glare performance. It is primarily suitable for lighting applications in public spaces, commercial, office, and exhibition areas.

Product Features

- Body Material: Aluminum alloy extruded lamp body
- Optical System: Lenticular
- Surface Finishing: Electrostatic powder coating
- Adjustable Angle: /
- Accessories: /
- Certification: CCC/CE
- IP Rating: IP20
- Insulation Level: Class II
- Operating Temperature: -20°C~40°C

Product Specifications

- Hole Size: 469mm*48mm
- Ceiling Thickness: 5mm~25mm
- Shielding Angle: /
- LED Type: High Power LED
- Source Lm: 2700K 3872lm; 3000K 4000lm; 3500K 4160lm; 4000K 4320lm
- LED Lifetime: >50000h-L70 /B10-Ta25°C(LM-80/TM-21)
- CCT/CRI: 2700K/3000K/3500K/4000K, Ra90
- SDCM: 3 SDCM
- Input: 220V~240V AC / 50Hz
- Dimming: On-Off /0~10V
- Net Weight: 1.3Kg without packing

Order Model

Model	Comment	Power(W)	Driver	Beam	CCT	Reflector	Finish
OR165 R Recessed mounting 1 Series 65 Width	WT Wallwash Trim	32 32W	E On-Off D 0-10V Dimming	W Wall Wash	27 2700K 30 3000K 35 3500K 40 4000K	B Black W White	WT White BK Black

Example: OR165WT-32E-W40BWT

LIGNE PRO - MODEL:OR165WT-32

Linear Luminaires

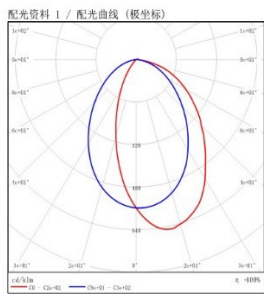
PROJECT:

WAC

TYPE:

Accessories

LIGHT DISTRIBUTION@4000K LUMINAIRE DATA



MODEL: OR165WT-32E-W40BWT

BEAM ANGLE: /

POWER: 35.5W

LUMENS: 2300lm

CBCP: /

EFFICACY: 65lm/W