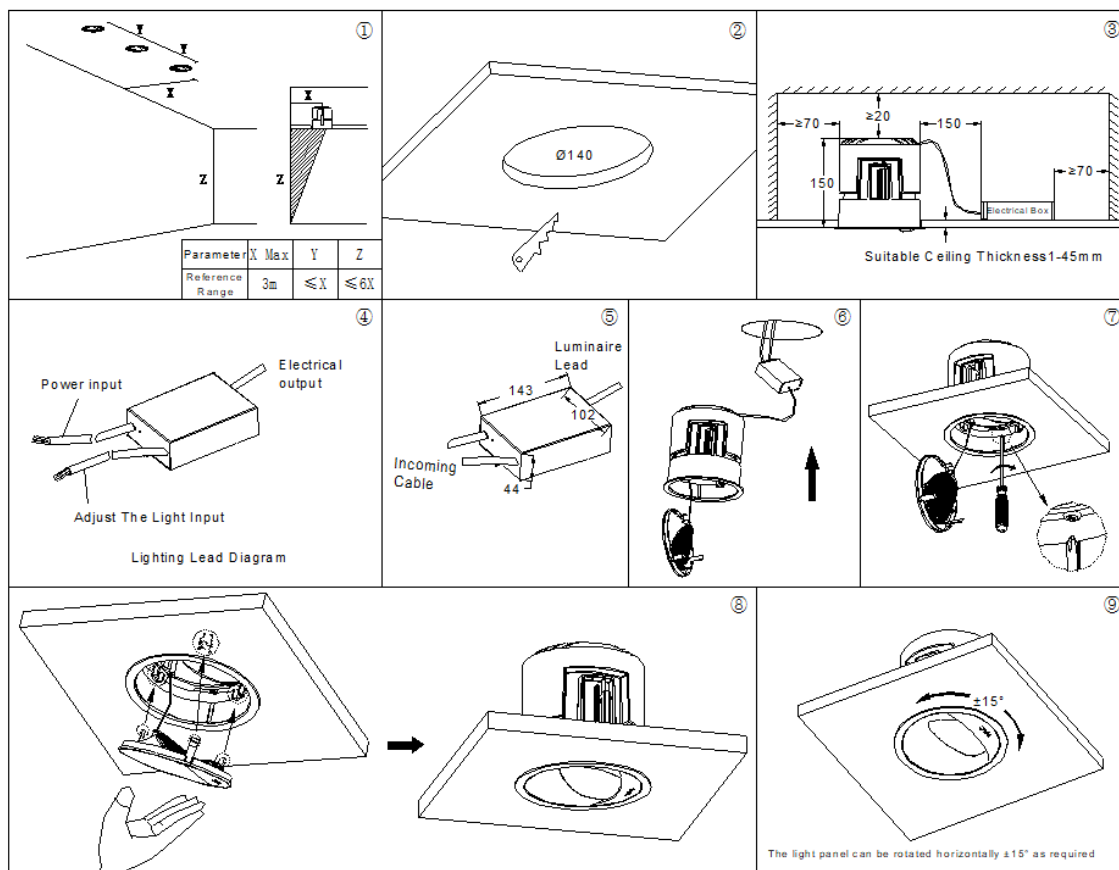


Installation Precautions:

1. Please read the instructions carefully before installation;
2. Ask a professional electrician to install;
3. In order to avoid the danger of electric shock, please confirm to turn off the power supply before installation and maintenance;
4. The lamp can be embedded in the installation surface of the ceiling, and sufficient installation space should be reserved. Do not cover the heat insulation and combustible materials above the lamp to avoid causing fire;
5. If the glass is cracked, please replace it immediately;
6. Do not install the lamp on the unstable and unstable skylight to avoid the lamp falling;
7. Keep the manual for reference;

Light Installation and Wiring:



- * Note: Connect the cable according to the voltage requirements of the power line input label; If there is a dimmer version, please pay attention to the light +/- pole, do not connect the wrong. Pay attention to waterproof treatment of cable joints.