

Product models:

This installation instruction applies to LED buried lights EIR9NF-04ET, EIR9TF-02ET, EIR9TF-01ET

Installation Statement:

1. Please read the manual carefully before installation;
2. Ask a professional electrician to install it;
3. In order to avoid the risk of electric shock, please confirm to turn off the power before installation and maintenance;
4. Keep the instruction manual for reference for use.

Equipped with PVC pipe installation:

1. Embed the PVC pipe at the installation position of the lamp and fix it with concrete (Figure 1), and refer to Table 1 for the size of the PVC pipe ;
2. Connect the luminaire leads with the 24VDC leads in the PVC pipe (Fig. 2)
3. Evenly coat the O-ring of the lamp with sealing silicone;
4. Insert the lamp into the PVC pipe and confirm that the flange of the lamp is flat with the mounting surface (Figure 3);
5. Clean the surface of the luminaire outlet (Picture 4).

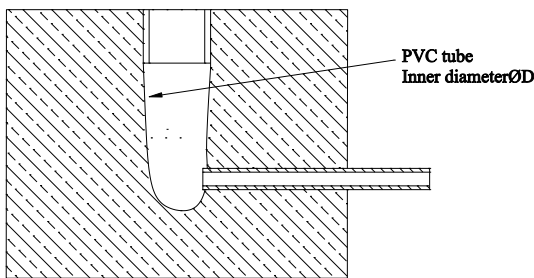


Figure 1

Luminaire model	PVC pipe inner diameter size ϕ D	PVC tube height
EIR9TF-01ET/02ET	ϕ 24.3mm \pm 0.3mm	70mm \pm 0.5mm
EIR9NF-04ET	ϕ 48.5mm \pm 0.3mm	50mm \pm 0.5mm

Table 1

Figure 2

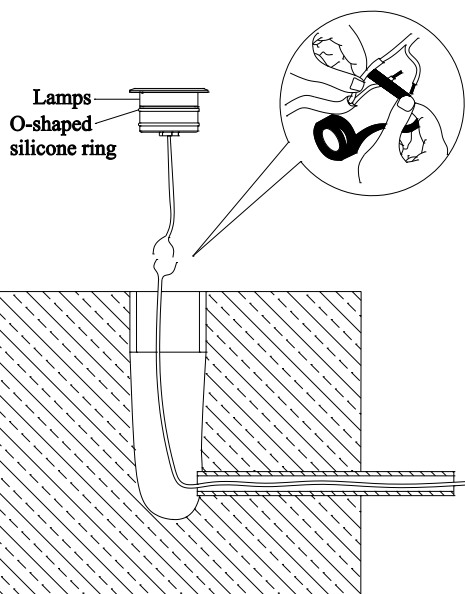


Figure 2

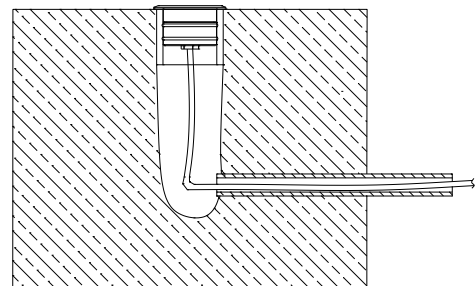


Figure 3

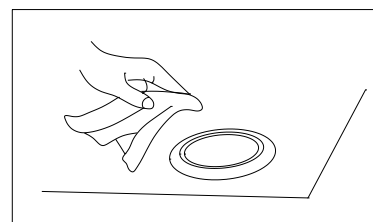


Figure 4

Disassembly and repair:

When the lamp needs to be repaired and disassembled, please refer to Figure 5

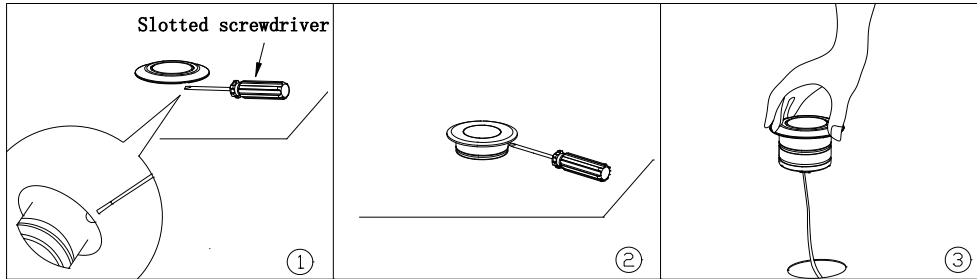
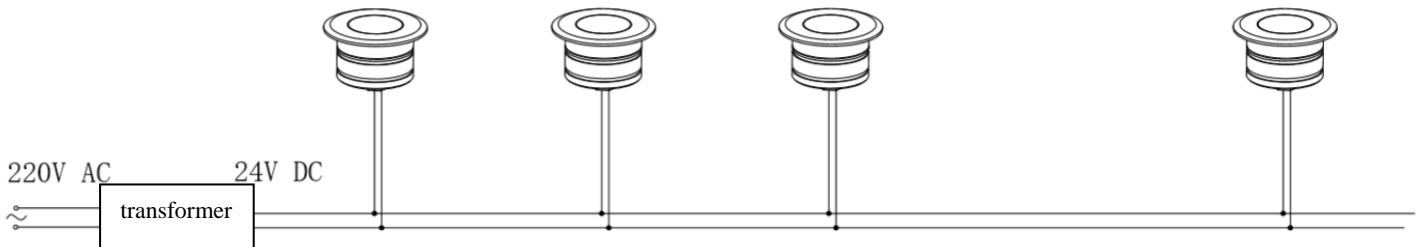


Figure 5

Wiring Instructions:



The number of lamps and lanterns has different requirements according to the transformer power, wire diameter and thickness, and wire length, see Table 2

Figure 6

Refer to Table 2 for the number of transformers, wire diameters and lamps connected in series:

Serial number	Transformer power (W)	Wire size (mm ²)	Wire length (m)	Recommended number of serial lamps (pcs)	
				Luminaire power 4W	Luminaire power 2W
1	100	1.0	50	10	21
2	100	1.0	40	11	23
3	100	1.0	30	12	25
4	100	1.0	20	13	28
5	100	1.0	10	14	30

Table 2

Note: ● The wire diameter in the table is the wire diameter at the output end of the transformer;

● The wires in the table are standard copper core wires

● In the table, the load capacity of the transformer is 100%, and if the load capacity decreases, it will be adjusted proportionally;

● Description of the calculation method of the number of lamp connections in the table: If the transformer power becomes 200W, the number of lamps connected in series should be increased accordingly. In order to ensure that the current carrying capacity of the conductor is not overloaded, the wire diameter must also be increased in proportion.